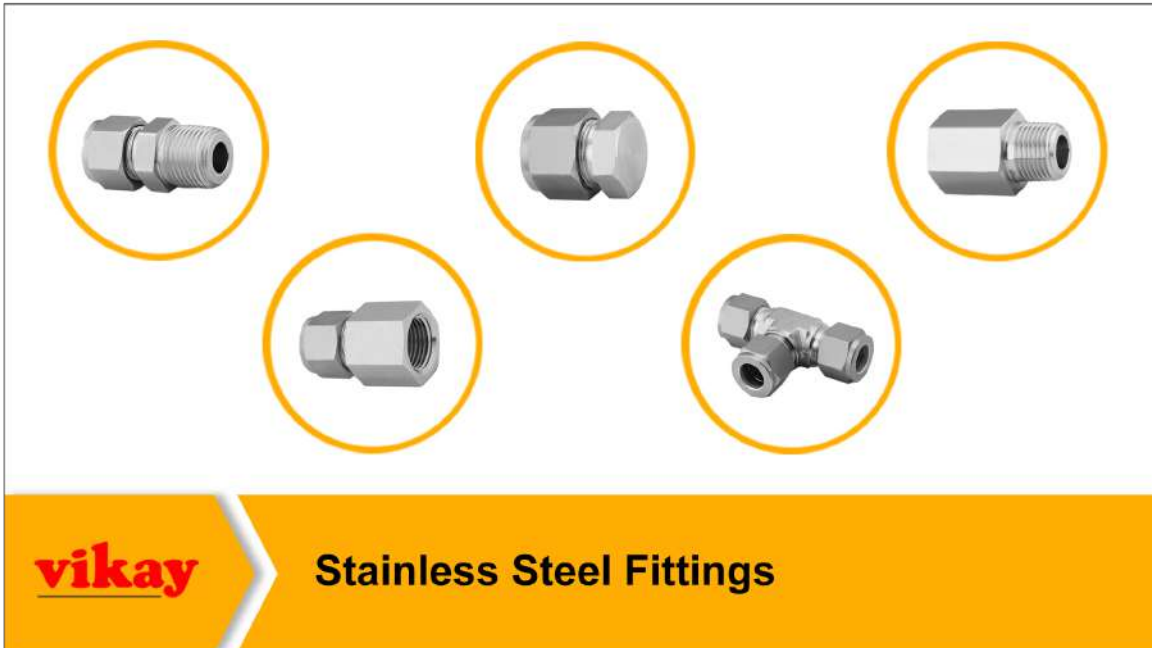




22 & 23. Stainless Steel Fittings



vikay

Stainless Steel Fittings

Sr. No.	Description	SKU Code	Page No.
---------	-------------	----------	----------

Tube To Male Pipe Thread

2.1 Male Connector

01. Fractional Tube x NPT(M)	MCD4 MCD6	5
02. Metric Tube x NPT (M)	MMCD4 MMCD6	6

2.2 Male Elbow

01. Fractional Tube x NPT (M)	MED4 MED6	7
02. Metric Tube x NPT (M)	MMED4 MMED6	8

2.3 Male Branch Tee

01. Fractional Tube x NPT (M)	MBTD4 MBTD6	9
02. Metric Tube x NPT (M)	MMBTD4 MMBTD6	9

Tube To Female Pipe Thread

2.4 Female Connector

01. Fractional Tube x NPT (F)	FCD4 FCD6	10
02. Metric Tube x NPT (F)	MFCD4 MFCD6	11

Tube Ends

2.5 Tube Cap

01. Fractional Tube	TCD4 TCD6	12
02. Metric Tube	MTCD4 MTCD6	12

2.6 Plug

01. Fractional Tube	PD4 PD6	13
02. Metric Tube	MPD4 MPD6	13

Sr. No.	Description	SKU Code	Page No.
---------	-------------	----------	----------

Tube To Tube

2.7 Union

01. Fractional Tube x Fractional Tube	UD4 UD6	14
02. Metric Tube x Metric Tube	MMCD4 MMCD6	14

2.8 Reducer Union

01. Fractional Tube x Fractional Tube	RUD4 RUD6	15
02. Metric Tube x Metric Tube	MRUD4 MRUD6	15

2.9 Bulkhead Union

01. Fractional Tube x Fractional Tube	BUD4 BUD6	16
02. Metric Tube x Metric Tube	MBUD4 MBUD6	16

2.10 Union Elbow

01. Fractional Tube x Fractional Tube	UED4 UED6	17
02. Metric Tube x Metric Tube	MUFD4 MUFD6	17

2.11 Union Tee

01. Fractional Tube x Fractional Tube	UTD4 UTD6	18
02. Metric Tube x Metric Tube	MUTD4 MUTD6	18

2.12 Union Cross

01. Fractional Tube x Fractional Tube	UCD4 UCD6	19
02. Metric Tube x Metric Tube	MUCD4 MUCD6	19

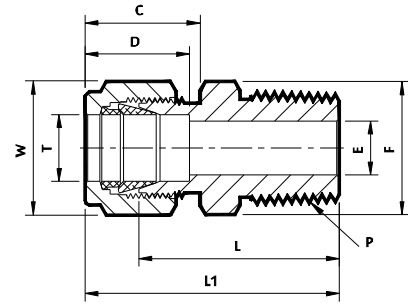
2.13. Pipe Fitting Part 1

01. Hex Reducing Nipple	PHRN4 PHRN6	20
02. Adapter (NPT (M) x NPT (F))	NPA4 NPA6	20
03. Reducing Adapter (NPT (F) x NPT (M))	PRA4 PRA6	21
04. Reducing Bushing (NPT (M) x NPT (F))	PRB4 PRB6	21
05. Hex Coupling (NPT (F) x NPT (F))	NPHC4 NPHC6	22
06. Hex Reducing Coupling (NPT (F) x NPT (F))	PHRC4 PHRC6	22

2.1 Male Connector

01. Fractional Tube x NPT (M)

Material - **SS 304 | SS 316**



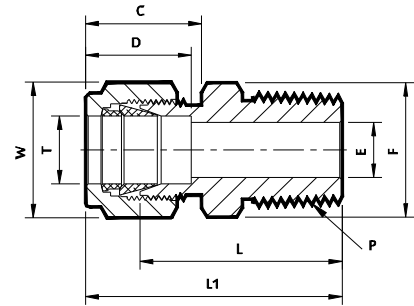
Sr. No.	TUBE OD Ø T	NPT Male Pipe Size P	Ref. Part No.		ØE	D	C	L	L1	Body Hex F	Nut Hex W
			SS 304 MCD4	SS 316 MCD6							
Dimensions in Inches											
1	1/8 x 1/8		2MCD2Nx4	2MCD2Nx6	0.09	0.50	0.60	0.94	1.20	7/16	7/16
2	1/8 x 1/4		2MCD4Nx4	2MCD4Nx6	0.09			1.14	1.40	9/16	
3	1/4 x 1/8		4MCD2Nx4	4MCD2Nx6	0.19	0.60	0.70	1.00	1.29	1/2	9/16
4	1/4 x 1/4		4MCD4Nx4	4MCD4Nx6	0.19			1.20	1.49	9/16	
5	1/4 x 3/8		4MCD6Nx4	4MCD6Nx6	0.19			1.22	1.51	11/16	
6	1/4 x 1/2		4MCD8Nx4	4MCD8Nx6	0.19			1.47	1.76	7/8	
7	5/16 x 1/8		5MCD2Nx4	5MCD2Nx6	0.19	0.64	0.73	1.05	1.34	5/8	5/8
8	5/16 x 1/4		5MCD4Nx4	5MCD4Nx6	0.25			1.23	1.52	5/8	
9	5/16 x 3/8		5MCD6Nx4	5MCD6Nx6	0.25			1.25	1.54	11/16	
10	5/16 x 1/2		5MCD8Nx4	5MCD8Nx6	0.25			1.50	1.79	7/8	
11	3/8 x 1/8		6MCD2Nx4	6MCD2Nx6	0.19	0.66	0.76	1.10	1.39	11/16	11/16
12	3/8 x 1/4		6MCD4Nx4	6MCD4Nx6	0.28			1.28	1.57	11/16	
13	3/8 x 3/8		6MCD6Nx4	6MCD6Nx6	0.28			1.28	1.57	11/16	
14	3/8 x 1/2		6MCD8Nx4	6MCD8Nx6	0.28			1.53	1.82	7/8	
15	1/2 x 1/4		8MCD4Nx4	8MCD4Nx6	0.28	0.90	0.86	1.31	1.71	13/16	7/8
16	1/2 x 3/8		8MCD6Nx4	8MCD6Nx6	0.38			1.31	1.71	13/16	
17	1/2 x 1/2		8MCD8Nx4	8MCD8Nx6	0.41			1.53	1.93	7/8	
18	1/2 x 3/4		8MCD12Nx4	8MCD12Nx6	0.41			1.59	1.99	1.1/16	
19	5/8 x 1/2		10MCD8Nx4	10MCD8Nx6	0.47	0.96	0.86	1.53	1.93	1	1
20	5/8 x 3/4		10MCD12Nx4	10MCD12Nx6	0.50			1.59	1.99	1.1/16	
21	3/4 x 1/2		12MCD8Nx4	12MCD8Nx6	0.47	0.96	0.86	1.59	1.99	1.1/16	1.1/8
22	3/4 x 3/4		12MCD12Nx4	12MCD12Nx6	0.62			1.59	1.99	1.1/16	
23	1 x 1/2		16MCD8Nx4	16MCD8Nx6	0.47	1.23	1.04	1.78	2.26	1.3/8	1.1/2
24	1 x 3/4		16MCD12Nx4	16MCD12Nx6	0.62			1.78	2.26	1.3/8	
25	1 x 1		16MCD16Nx4	16MCD16Nx6	0.88			1.97	2.45	1.3/8	

- NOTE : ① The E Dimension is the minimum opening & Fittings of this group may be back drilling to lager ID at pipe thread or straight thread end
 ② Dimension L1, C, D is shown in the finger-tight position.
 ③ NPT thread as per ANSI B 1.20.1.

2.1 Male Connector

02. Metric Tube x NPT (M)

Material - **SS 304 | SS 316**



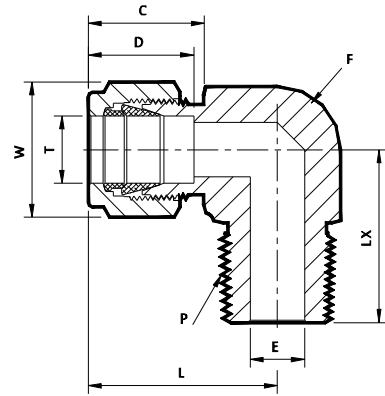
Sr. No.	TUBE OD Ø T	NPT Male Pipe Size	Ref. Part No.		ØE	D	C	L	L1	Body Hex F	Nut Hex W
			SS 304	SS 316							
	(mm)	(In)	MMCD4	MMCD6			Dimensions in Millimetres				
1	6 x 1/8		6MMCD2Nx4	6MMCD2Nx6	4.8	15.3	17.7	25.4	32.8	14.2	14.2
2	6 x 1/4		6MMCD4Nx4	6MMCD4Nx6	4.8			30.5	37.9	14.2	
3	6 x 3/8		6MMCD6Nx4	6MMCD6Nx6	4.8			31.0	38.4	17.4	
4	6 x 1/2		6MMCD8Nx4	6MMCD8Nx6	4.8			37.3	44.7	22.2	
5	8 x 1/8		8MMCD2Nx4	8MMCD2Nx6	4.8	16.2	18.6	26.7	34.2	16	16
6	8 x 1/4		8MMCD4Nx4	8MMCD4Nx6	6.4			31.2	38.7	16	
7	8 x 3/8		8MMCD6Nx4	8MMCD6Nx6	6.4			31.8	39.3	17.4	
8	8 x 1/2		8MMCD8Nx4	8MMCD8Nx6	6.4			38.1	45.6	22.2	
9	10 x 1/8		10MMCD2Nx4	10MMCD2Nx6	4.8	17.2	19.5	28.7	36.3	19	19
10	10 x 1/4		10MMCD4Nx4	10MMCD4Nx6	7.9			33.3	40.9	19	
11	10 x 3/8		10MMCD6Nx4	10MMCD6Nx6	7.9			33.3	40.9	19	
12	10 x 1/2		10MMCD8Nx4	10MMCD8Nx6	7.9			38.9	46.5	22.2	
13	12 x 1/8		12MMCD2Nx4	12MMCD2Nx6	4.8	22.8	22.0	28.7	38.8	22.2	22.2
14	12 x 1/4		12MMCD4Nx4	12MMCD4Nx6	7.1			33.3	43.4	22.2	
15	12 x 3/8		12MMCD6Nx4	12MMCD6Nx6	9.5			33.3	43.4	22.2	
16	12 x 1/2		12MMCD8Nx4	12MMCD8Nx6	9.5			38.9	49.0	22.2	
17	12 x 3/4		12MMCD12Nx4	12MMCD12Nx6	9.5		40.4	50.5	27		
18	15 x 1/2		15MMCD8Nx4	15MMCD8Nx6	11.9	24.4	22.0	38.9	49.0	25.4	25.4
19	16 x 3/8		16MMCD6Nx4	16MMCD6Nx6	9.5	24.4	22.0	34.0	44.1	25.4	25.4
20	16 x 1/2		16MMCD8Nx4	16MMCD8Nx6	11.9			38.9	49.0	25.4	
21	16 x 3/4		16MMCD12Nx4	16MMCD12Nx6	12.7			40.4	50.5	25.4	
22	18 x 1/2		18MMCD8Nx4	18MMCD8Nx6	11.9			40.4	50.5	27	
23	18 x 3/4		18MMCD12Nx4	18MMCD12Nx6	15.1	24.4	22.0	40.4	50.5	27	30
24	20 x 1/2		20MMCD8Nx4	20MMCD8Nx6	11.9	26.0	22.0	42.2	52.3	30	32
25	20 x 3/4		20MMCD12Nx4	20MMCD12Nx6	15.9			42.2	52.3	30	
26	20 x 1		20MMCD16Nx4	20MMCD16Nx6	21.8			47.1	57.7	35	
27	25 x 1/2		25MMCD8Nx4	25MMCD8Nx6	11.9			45.2	57.5	35	
28	25 x 3/4		25MMCD12Nx4	25MMCD12Nx6	15.9	31.3	26.5	45.2	57.5	35	38
29	25 x 1		25MMCD16Nx4	25MMCD16Nx6	21.8			50.0	62.3	35	

- NOTE :
- ① The E Dimension is the minimum opening & Fittings of this group may be back drilling to lager ID at pipe thread or straight thread end
 - ② Dimension L1, C, D is shown in the finger-tight position.
 - ③ NPT thread as per ANSI B 1.20.1.

2.2 Male Elbow

01. Fractional Tube x NPT (M)

Material - **SS 304 | SS 316**



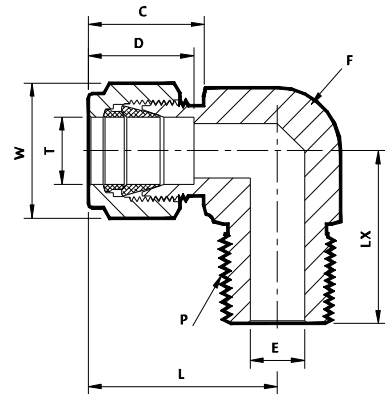
Sr. No.	TUBE OD Ø T	NPT Male Pipe Size P	Ref. Part No.		ØE	D	C	L	LX	Body Hex F	Nut Hex W
			SS 304 MED4	SS 316 MED6							
Dimensions in Inches											
1	1/8 x 1/8		2MED2Nx4	2MED2Nx6	0.09	0.50	0.60	0.93	0.70	1/2	7/16
2	1/8 x 1/4		2MED4Nx4	2MED4Nx6	0.09			0.97	0.92	9/16	
3	1/4 x 1/8		4MED2Nx4	4MED2Nx6	0.19	0.60	0.70	1.06	0.74	9/16	9/16
4	1/4 x 1/4		4MED4Nx4	4MED4Nx6	0.19			1.06	0.92	9/16	
5	1/4 x 3/8		4MED6Nx4	4MED6Nx6	0.19			1.17	1.03	11/16	
6	1/4 x 1/2		4MED8Nx4	4MED8Nx6	0.19			1.25	1.30	13/16	
7	5/16 x 1/8		5MED2Nx4	5MED2Nx6	0.19	0.64	0.73	1.13	0.78	9/16	5/8
8	5/16 x 1/4		5MED4Nx4	5MED4Nx6	0.25			1.13	0.96	9/16	
9	5/16 x 3/8		5MED6Nx4	5MED6Nx6	0.25			1.20	1.03	11/16	
10	3/8 x 1/8		6MED2Nx4	6MED2Nx6	0.19	0.66	0.76	1.20	0.82	5/8	11/16
11	3/8 x 1/4		6MED4Nx4	6MED4Nx6	0.28			1.20	1.00	5/8	
12	3/8 x 3/8		6MED6Nx4	6MED6Nx6	0.28			1.23	1.03	11/16	
13	3/8 x 1/2		6MED8Nx4	6MED8Nx6	0.28			1.31	1.30	7/8	
14	1/2 x 1/4		8MED4Nx4	8MED4Nx6	0.28	0.90	0.86	1.42	1.11	13/16	7/8
15	1/2 x 3/8		8MED6Nx4	8MED6Nx6	0.38			1.42	1.11	13/16	
16	1/2 x 1/2		8MED8Nx4	8MED8Nx6	0.41			1.42	1.30	7/8	
17	1/2 x 3/4		8MED12Nx4	8MED12Nx6	0.41			1.57	1.45	1.1/16	
18	5/8 x 1/2		10MED8Nx4	10MED8Nx6	0.47	0.96	0.86	1.50	1.38	15/16	1
19	5/8 x 3/4		10MED12Nx4	10MED12Nx6	0.50			1.57	1.45	1.1/16	
20	3/4 x 1/2		12MED8Nx4	12MED8Nx6	0.47	0.96	0.86	1.57	1.45	1.1/16	1.1/8
21	3/4 x 3/4		12MED12Nx4	12MED12Nx6	0.62			1.57	1.45	1.1/16	
22	1 x 3/4		16MED12Nx4	16MED12Nx6	0.62	1.23	1.04	1.93	1.64	1.3/8	1.1/2
23	1 x 1		16MED16Nx4	16MED16Nx6	0.88			1.93	1.83	1.3/8	

- NOTE :
- ① The E Dimension is the minimum opening & Fittings of this group may be back drilling to lager ID at pipe thread or straight thread end
 - ② Dimension LX, C, D is shown in the finger-tight position.
 - ③ NPT thread as per ANSI B 1.20.1.

2.2 Male Elbow

02. Metric Tube x NPT (M)

Material - **SS 304 | SS 316**

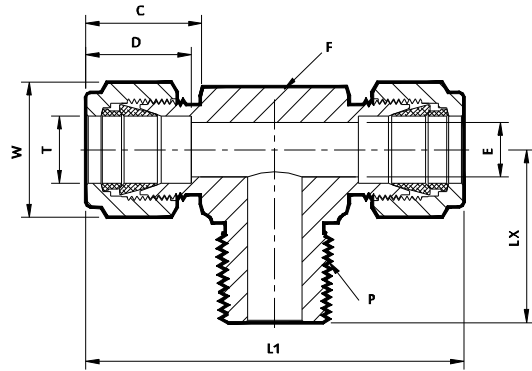


Sr. No.	TUBE OD Ø T	NPT Male Pipe Size P	Ref. Part No.		ØE	D	C	L	LX	Body Hex F	Nut Hex W
			SS 304	SS 316							
	(mm)	(Inch)	MMED4	MMED6	Dimensions in Millimetres						
1	6 x 1/8		6MMED2Nx4	6MMED2Nx6	4.8	15.3	17.7	27.0	18.8	15	14.2
2	6 x 1/4		6MMED4Nx4	6MMED4Nx6	4.8			27.0	23.4	15	
3	6 x 3/8		6MMED6Nx4	6MMED6Nx6	4.8			29.8	26.2	17.5	
4	6 x 1/2		6MMED8Nx4	6MMED8Nx6	4.8			31.8	33.0	22.5	
5	8 x 1/8		8MMED2Nx4	8MMED2Nx6	4.8	16.2	18.6	28.8	19.8	15	16
6	8 x 1/4		8MMED4Nx4	8MMED4Nx6	6.4			28.8	24.4	15	
7	8 x 3/8		8MMED6Nx4	8MMED6Nx6	6.4			30.6	26.2	17.5	
8	8 x 1/2		8MMED8Nx4	8MMED8Nx6	6.4			32.6	33.0	22.5	
9	10 x 1/8		10MMED2Nx4	10MMED2Nx6	4.8	17.2	19.5	31.5	21.6	20.5	19
10	10 x 1/4		10MMED4Nx4	10MMED4Nx6	7.1			31.5	26.2	20.5	
11	10 x 3/8		10MMED6Nx4	10MMED6Nx6	7.9			31.5	26.2	20.5	
12	10 x 1/2		10MMED8Nx4	10MMED8Nx6	7.9			33.5	33.0	22.5	
13	12 x 1/4		12MMED4Nx4	12MMED4Nx6	7.1	22.8	22.2	36.0	28.2	20.5	22.2
14	12 x 3/8		12MMED6Nx4	12MMED6Nx6	9.5			36.0	28.2	20.5	
15	12 x 1/2		12MMED8Nx4	12MMED8Nx6	9.5			36.0	33.0	22.5	
16	12 x 3/4		12MMED12Nx4	12MMED12Nx6	9.5			39.8	36.8	27.5	
17	15 x 1/2		15MMED8Nx4	15MMED8Nx6	11.9	24.4	22.0	38.0	35.1	27.5	25.4
18	16 x 3/8		16MMED6Nx4	16MMED6Nx6	9.5	24.4	22.0	38.0	30.2	27.5	25.4
19	16 x 1/2		16MMED8Nx4	16MMED8Nx6	11.9			38.0	35.1	27.5	
20	16 x 3/4		16MMED12Nx4	16MMED12Nx6	12.7			39.8	36.8	27.5	
21	18 x 1/2		18MMED8Nx4	18MMED8Nx6	11.9			39.8	36.8	27.5	
22	18 x 3/4		18MMED12Nx4	18MMED12Nx6	15.1	26.0	22.0	39.8	36.8	27.5	30
23	20 x 1/2		20MMED8Nx4	20MMED8Nx6	11.9			44.6	41.7	32	
24	20 x 3/4		20MMED12Nx4	20MMED12Nx6	5.9			44.6	41.7	32	
25	22 x 3/4		22MMED12Nx4	22MMED12Nx6	15.9			44.6	41.7	32	
26	25 x 3/4		25MMED12Nx4	25MMED12Nx6	15.9	31.3	26.5	49.1	41.7	36	38
27	25 x 1		25MMED16Nx4	25MMED16Nx6	21.8			49.1	46.5	36	

- NOTE :
- ① The E Dimension is the minimum opening & Fittings of this group may be back drilling to lager ID at pipe thread or straight thread end
 - ② Dimension LX, C, D is shown in the finger-tight position.
 - ③ NPT thread as per ANSI B 1.20.1.

2.3 Male Branch Tee

01. Fractional Tube x NPT (M) Material - **SS 304 | SS 316**



Sr. No.	TUBE OD Ø T	NPT Male Pipe Size P	Ref. Part No.		ØE	D	C	L1	LX	Body Hex F	Nut Hex W
			SS 304	SS 316							
			MBTD4	MBTD6		Dimensions in Inches					
1	1/8 x 1/8		2MBTD2Nx4	2MBTD2Nx6	0.09	0.50	0.60	1.86	0.70	1/2	7/16
2	1/8 x 1/4		2MBTD4Nx4	2MBTD4Nx6	0.09			1.94	0.92	9/16	
3	1/4 x 1/8		4MBTD2Nx4	4MBTD2Nx6	0.19	0.60	0.70	2.12	0.74	9/16	9/16
4	1/4 x 1/4		4MBTD4Nx4	4MBTD4Nx6	0.19			2.12	0.92	9/16	
5	5/16 x 1/8		5MBTD2Nx4	5MBTD2Nx6	0.19	0.64	0.73	2.34	0.82	5/8	5/8
6	5/16 x 1/4		5MBTD4Nx4	5MBTD4Nx6	0.25			2.34	1.01	5/8	
7	3/8 x 1/4		6MBTD4Nx4	6MBTD4Nx6	0.28	0.66	0.76	2.40	1.00	5/8	11/16
8	3/8 x 3/8		6MBTD6Nx4	6MBTD6Nx6	0.28			2.62	1.11	13/16	
9	1/2 x 3/8		8MBTD6Nx4	8MBTD6Nx6	0.38	0.90	0.86	2.84	1.11	13/16	7/8
10	1/2 x 1/2		8MBTD8Nx4	8MBTD8Nx6	0.41			2.84	1.30	7/8	
11	5/8 x 1/2		10MBTD8Nx4	10MBTD8Nx6	0.47	0.96	0.86	3.06	1.41	15/16	1
12	3/4 x 3/4		12MBTD12Nx4	12MBTD12Nx6	0.62	0.96	0.86	3.14	1.45	1.1/16	1.1/8
13	1 x 3/4		16MBTD12Nx4	16MBTD12Nx6	0.62	1.23	1.04	3.88	1.66	1.3/8	1.1/2
14	1 x 1		16MBTD16Nx4	16MBTD16Nx6	0.88			3.88	1.84	1.3/8	

02. Metric Tube x NPT (M) Material - **SS 304 | SS 316**

Sr. No.	TUBE OD Ø T	NPT Male Pipe Size P	Ref. Part No.		ØE	D	C	L1	LX	Body Hex F	Nut Hex W
			SS 304	SS 316							
	(mm)	(In)	MMBTD4	MMBTD6		Dimensions in Millimetres					
1	6 x 1/8		6MMBTD2Nx4	6MMBTD2Nx6	4.8	15.3	17.7	53.9	27.0	15	14.2
2	6 x 1/4		6MMBTD4Nx4	6MMBTD4Nx6	4.8			53.9	27.0	15	
3	8 x 1/8		8MMBTD2Nx4	8MMBTD2Nx6	4.8	16.2	18.6	59.7	29.9	15	16
4	8 x 1/4		8MMBTD4Nx4	8MMBTD4Nx6	6.4			59.7	29.9	15	
5	10 x 1/4		10MMBTD4Nx4	10MMBTD4Nx6	7.1	17.2	19.5	67.0	33.5	20.5	19
6	10 x 3/8		10MMBTD6Nx4	10MMBTD6Nx6	7.9			67.0	33.5	20.5	
7	12 x 1/4		12MMBTD4Nx4	12MMBTD4Nx6	7.1	22.8	22.0	72.0	36.0	20.5	22.2
8	12 x 3/8		12MMBTD6Nx4	12MMBTD6Nx6	9.5			72.0	36.0	20.5	
9	12 x 1/2		12MMBTD8Nx4	12MMBTD8Nx6	9.5			72.0	36.0	22.5	
10	16 x 1/2		16MMBTD8Nx4	16MMBTD8Nx6	11.9	24.4	22.0	77.6	38.8	27.5	25.4

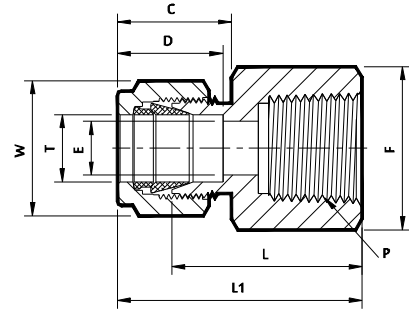
- NOTE :
- ① The E Dimension is the minimum opening & Fittings of this group may be back drilling to lager ID at pipe thread or straight thread end
 - ② Dimension L1, C, D is shown in the finger-tight position.
 - ③ NPT thread as per ANSI B 1.20.1.

All part numbers are proprietary of their respective owners, Dimensions are for reference only and are subject to change

2.4 Female Connector

01. Fractional Tube x NPT (F)

Material - **SS 304 | SS 316**



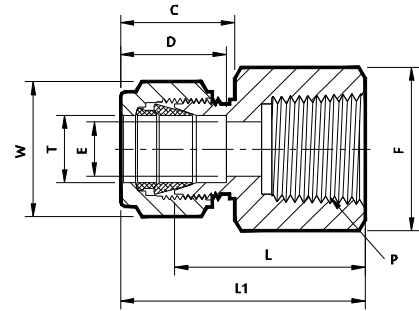
Sr. No.	TUBE OD Ø T	NPT Female Pipe Size P	Ref. Part No.		ØE	D	C	L	L1	Body Hex F	Nut Hex W
			SS 304	SS 316							
			FCD4	FCD6	Dimensions in Inches						
1	1/8 x 1/8		2FCD2Nx4	2FCD2Nx6	0.09	0.50	0.60	0.87	1.13	9/16	7/16
2	1/8 x 1/4		2FCD4Nx4	2FCD4Nx6	0.09			1.06	1.32	3/4	
3	1/4 x 1/8		4FCD2Nx4	4FCD2Nx6	0.19	0.60	0.70	0.94	1.23	9/16	9/16
4	1/4 x 1/4		4FCD4Nx4	4FCD4Nx6	0.19			1.12	1.41	3/4	
5	1/4 x 3/8		4FCD6Nx4	4FCD6Nx6	0.19			1.19	1.48	7/8	
6	1/4 x 1/2		4FCD8Nx4	4FCD8Nx6	0.19			1.38	1.67	1.1/16	
7	5/16 x 1/8		5FCD2Nx4	5FCD2Nx6	0.25	0.64	0.73	0.97	1.26	9/16	5/8
8	5/16 x 1/4		5FCD4Nx4	5FCD4Nx6	0.25			1.16	1.45	3/4	
9	5/16 x 3/8		5FCD6Nx4	5FCD6Nx6	0.25			1.22	1.51	7/8	
10	3/8 x 1/8		6FCD2Nx4	6FCD2Nx6	0.28	0.66	0.76	1.00	1.29	5/8	11/16
11	3/8 x 1/4		6FCD4Nx4	6FCD4Nx6	0.28			1.19	1.48	3/4	
12	3/8 x 3/8		6FCD6Nx4	6FCD6Nx6	0.28			1.25	1.54	7/8	
13	3/8 x 1/2		6FCD8Nx4	6FCD8Nx6	0.28			1.44	1.73	1.1/16	
14	1/2 x 1/4		8FCD4Nx4	8FCD4Nx6	0.41	0.90	0.86	1.19	1.59	13/16	7/8
15	1/2 x 3/8		8FCD6Nx4	8FCD6Nx6	0.41			1.25	1.65	7/8	
16	1/2 x 1/2		8FCD8Nx4	8FCD8Nx6	0.41			1.44	1.84	1.1/16	
17	1/2 x 3/4		8FCD12Nx4	8FCD12Nx6	0.41			1.50	1.90	1.5/16	
18	5/8 x 1/2		10FCD8Nx4	10FCD8Nx6	0.50	0.96	0.86	1.44	1.84	1.1/16	1
19	5/8 x 3/4		10FCD12Nx4	10FCD12Nx6	0.50			1.50	1.90	1.5/16	
20	3/4 x 1/2		12FCD8Nx4	12FCD8Nx6	0.62	0.96	0.86	1.44	1.84	1.1/16	1.1/8
21	3/4 x 3/4		12FCD12Nx4	12FCD12Nx6	0.62			1.50	1.90	1.5/16	
22	1 x 3/4		16FCD12Nx4	16FCD12Nx6	0.88	1.23	1.04	1.62	2.10	1.3/8	1.1/2
23	1 x 1		16FCD16Nx4	16FCD16Nx6	0.88			1.97	2.45	1.5/8	

- NOTE :
- ① The E Dimension is the minimum opening & Fittings of this group may be back drilling to lager ID at pipe thread or straight thread end
 - ② Dimension L1, C, D is shown in the finger-tight position.
 - ③ NPT thread as per ANSI B 1.20.1.

2.4 Female Connector

02. Metric Tube x NPT (F)

Material - **SS 304 | SS 316**



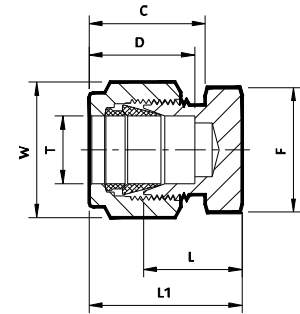
Sr. No.	TUBE	NPT	Ref. Part No.		ØE	D	C	L	L1	Body Hex F	Nut Hex W
	OD Ø T	Female Pipe Size P	SS 304	SS 316							
	(mm)	(Inch)	MFCD4	MFCD6	Dimensions in Millimetres						
1	6 x 1/8		6MFCD2Nx4	6MFCD2Nx6	4.8	15.3	17.7	23.9	31.3	14.2	14.2
2	6 x 1/4		6MFCD4Nx4	6MFCD4Nx6	4.8			28.4	35.8	19	
3	6 x 3/8		6MFCD6Nx4	6MFCD6Nx6	4.8			30.2	37.6	22.2	
4	6 x 1/2		6MFCD8Nx4	6MFCD8Nx6	4.8			35.1	42.5	27	
5	8 x 1/8		8MFCD2Nx4	8MFCD2Nx6	6.4	16.2	18.6	24.6	32.1	16	16
6	8 x 1/4		8MFCD4Nx4	8MFCD4Nx6	6.4			29.5	37.0	19	
7	8 x 3/8		8MFCD6Nx4	8MFCD6Nx6	6.4			31.0	38.5	22.2	
8	8 x 1/2		8MFCD8Nx4	8MFCD8Nx6	6.4			35.8	43.3	27	
9	10 x 1/4		10MFCD4Nx4	10MFCD4Nx6	7.9	17.2	19.5	30.2	37.8	19	19
10	10 x 3/8		10MFCD6Nx4	10MFCD6Nx6	7.9			31.8	39.4	22.2	
11	10 x 1/2		10MFCD8Nx4	10MFCD8Nx6	7.9			36.6	44.2	27	
12	12 x 1/4		12MFCD4Nx4	12MFCD4Nx6	9.5	22.8	22.0	30.2	40.3	22.2	22.2
13	12 x 3/8		12MFCD6Nx4	12MFCD6Nx6	9.5			31.8	41.9	22.2	
14	12 x 1/2		12MFCD8Nx4	12MFCD8Nx6	9.5			36.6	46.7	27	
15	15 x 1/2		15MFCD8Nx4	15MFCD8Nx6	11.9	24.4	22.0	36.6	46.7	27	25.4
16	16 x 3/8		16MFCD6Nx4	16MFCD6Nx6	9.5	24.4	22.0	31.8	41.9	27	25.4
17	16 x 1/2		16MFCD8Nx4	16MFCD8Nx6	12.7			36.8	46.9	27	
18	20 x 1/2		20MFCD8Nx4	20MFCD8Nx6	15.9	26.0	22.0	37.8	47.9	30	32
19	20 x 3/4		20MFCD12Nx4	20MFCD12Nx6	15.9			39.6	49.7	35	
20	22 x 3/4		22MFCD12Nx4	22MFCD12Nx6	18.3	26.0	22.0	39.6	49.7	35	32
21	22 x 1		22MFCD16Nx4	22MFCD16Nx6	18.3			47.8	57.9	41	
22	25 x 3/4		25MFCD12Nx4	25MFCD12Nx6	21.8	31.3	26.5	41.1	53.4	35	38
23	25 x 1		25MFCD16Nx4	25MFCD16Nx6	21.8			50.0	62.3	41	

- NOTE :
- ① The E Dimension is the minimum opening.
 - ② Dimension L1, C, D is shown in the finger-tight position.
 - ③ NPT thread as per ANSI B 1.20.1.

2.5 Tube Cap

01. Fractional Tube

Material - **SS 304 | SS 316**



Sr. No.	TUBE OD Ø T	Ref. Part No.		D	C	L	L1	Body Hex F	Nut Hex W
		SS 304	SS 316						
		TCD4	TCD6	Dimensions in Inches					
1	1/8	2TCDx4	2TCDx6	0.50	0.60	0.53	0.79	7/16	7/16
2	1/4	4TCDx4	4TCDx6	0.60	0.70	0.63	0.92	9/16	9/16
3	5/16	5TCDx4	5TCDx6	0.64	0.73	0.67	0.96	5/8	5/8
4	3/8	6TCDx4	6TCDx6	0.66	0.76	0.72	1.01	11/16	11/16
5	1/2	8TCDx4	8TCDx6	0.90	0.86	0.75	1.15	7/8	7/8
6	5/8	10TCDx4	10TCDx6	0.96	0.86	0.78	1.18	1	1
7	3/4	12TCDx4	12TCDx6	0.96	0.86	0.84	1.24	1.1/16	1.1/8
8	1	16TCDx4	16TCDx6	1.23	1.04	1.03	1.51	1.3/8	1.1/2

02. Metric Tube

Material - **SS 304 | SS 316**

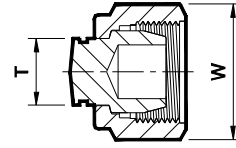
Sr. No.	TUBE OD Ø T	Ref. Part No.		D	C	L	L1	Body Hex F	Nut Hex W
		SS 304	SS 316						
		MTC4	MTC6	Dimensions in Millimetres					
1	3	3MTCx4	3MTCx6	12.9	15.3	13.5	20.1	11.1	11.1
2	6	6MTCx4	6MTCx6	15.3	17.7	15.7	23.1	14.2	14.2
3	8	8MTCx4	8MTCx6	16.2	18.6	17.0	24.5	16	16
4	10	10MTCx4	10MTCx6	17.2	19.5	19.0	26.6	19	19
5	12	12MTCx4	12MTCx6	22.8	22.0	19.0	29.1	22.2	22.2
6	14	14MTCx4	14MTCx6	24.4	22.0	19.8	29.9	25.4	25.4
7	15	15MTCx4	15MTCx6	24.4	22.0	19.8	29.9	25.4	25.4
8	16	16MTCx4	16MTCx6	24.4	22.0	19.8	29.9	25.4	25.4
9	18	18MTCx4	18MTCx6	24.4	22.0	21.3	31.4	27	30
10	20	20MTCx4	20MTCx6	26.0	22.0	23.9	34.0	30	32
11	25	25MTCx4	25MTCx6	31.3	26.5	26.2	38.5	35	38

NOTE : ① Dimension L1, C, D is shown in the finger-tight position.

2.6 Plug

01. Fractional Tube

Material - **SS 304 | SS 316**



Sr. No.	TUBE OD Ø T	Ref. Part No.		Nut Hex W
		SS 304	SS 316	
		PD4	PD6	Dimensions in Inches
1	1/8	2PDx4	2PDx6	7/16
2	1/4	4PDx4	4PDx6	9/16
3	5/16	5PDx4	5PDx6	5/8
4	3/8	6PDx4	6PDx6	11/16
5	1/2	8PDx4	8PDx6	7/8
6	3/4	12PDx4	12PDx6	1.1/8
7	1	16PDx4	16PDx6	1.1/2

02. Metric Tube

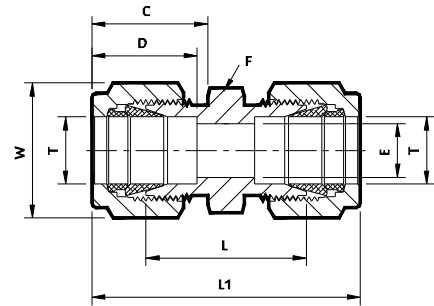
Material - **SS 304 | SS 316**

Sr. No.	TUBE OD Ø T	Ref. Part No.		Nut Hex W
		SS 304	SS 316	
		MPD4	MPD6	Dimensions in Millimetres
1	6	6MPDx4	6MPDx6	14.2
2	8	8MPDx4	8MPDx6	16
3	10	10MPDx4	10MPDx6	19
4	12	12MPDx4	12MPDx6	22.2
5	15	15MPDx4	15MPDx6	25.4
6	16	16MPDx4	16MPDx6	25.4
7	18	18MPDx4	18MPDx6	30
8	20	20MPDx4	20MPDx6	32
9	25	25MPDx4	25MPDx6	38

2.7 Union

01. Fractional Tube x Fractional Tube

Material - **SS 304 | SS 316**



Sr. No.	TUBE OD Ø T	Ref. Part No.		ØE	D	C	L	L1	Body Hex F	Nut Hex W
		SS 304	SS 316							
		UD4	UD6	Dimensions in Inches						
1	1/8	2UDx4	2UDx6	0.09	0.50	0.60	0.88	1.40	7/16	7/16
2	1/4	4UDx4	4UDx6	0.19	0.60	0.70	1.03	1.61	9/16	9/16
3	5/16	5UDx4	5UDx6	0.25	0.64	0.73	1.11	1.69	5/8	5/8
4	3/8	6UDx4	6UDx6	0.28	0.66	0.76	1.19	1.77	11/16	11/16
5	1/2	8UDx4	8UDx6	0.41	0.90	0.86	1.22	2.02	7/8	7/8
6	5/8	10UDx4	10UDx6	0.50	0.96	0.86	1.25	2.05	1	1
7	3/4	12UDx4	12UDx6	0.62	0.96	0.86	1.31	2.11	1.1/16	1.1/8
8	1	16UDx4	16UDx6	0.88	1.23	1.04	1.59	2.55	1.3/8	1.1/2

02. Metric Tube x Metric Tube

Material - **SS 304 | SS 316**

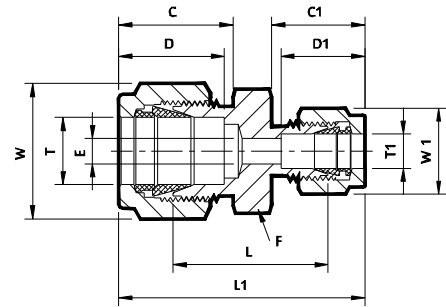
Sr. No.	TUBE OD Ø T	Ref. Part No.		ØE	D	C	L	L1	Body Hex F	Nut Hex W
		SS 304	SS 316							
		MUD4	MUD6	Dimensions in Millimetres						
1	3	3MUDx4	3MUDx6	2.4	12.9	15.3	35.3	35.3	11.1	11.1
2	6	6MUDx4	6MUDx6	4.8	15.3	17.7	41.0	41.0	14.2	14.2
3	8	8MUDx4	8MUDx6	6.4	16.2	18.6	43.2	43.2	16	16
4	10	10MUDx4	10MUDx6	7.9	17.2	19.5	46.2	46.2	19	19
5	12	12MUDx4	12MUDx6	9.5	22.8	22.0	51.2	51.2	22.2	22.2
6	15	15MUDx4	15MUDx6	11.9	24.4	22.0	52.0	52.0	25.4	25.4
7	16	16MUDx4	16MUDx6	12.7	24.4	22.0	52.0	52.0	25.4	25.4
8	18	18MUDx4	18MUDx6	15.1	24.4	22.0	53.5	53.5	27	30
9	20	20MUDx4	20MUDx6	15.9	26.0	22.0	55.0	55.0	30	32
10	25	25MUDx4	25MUDx6	21.8	31.3	26.5	65.0	65.0	35	38

- NOTE :
- ① The E Dimension is the minimum opening.
 - ② Dimension L1, C, D is shown in the finger-tight position.
 - ③ Dimensions are for reference only and are subject to change.

2.8 Reducer Union

01. Fractional Tube x Fractional Tube

Material - **SS 304 | SS 316**

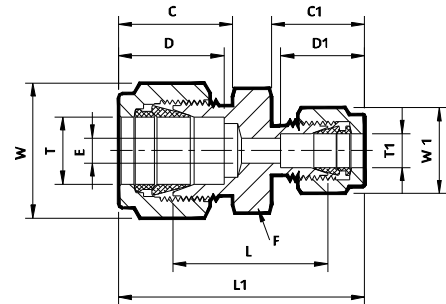


Sr. No.	TUBE OD	TUBE OD	Ref. Part No.		ØE	D	C	D1	C1	L	L1	Body Hex F	Nut Hex W	Nut Hex W1
	Ø T	Ø T1	SS 304	SS 316										
	(Inch)	(Inch)	RUD4	RUD6	Dimensions in Inches									
1	1/4 x 1/8		4RUD2x4	4RUD2x6	0.09	0.60	0.70	0.50	0.60	0.97	1.52	9/16	9/16	7/16
2	5/16 x 1/4		5RUD4x4	5RUD4x6	0.19	0.64	0.73	0.60	0.70	1.08	1.66	5/8	5/8	9/16
3	3/8 x 1/4		6RUD4x4	6RUD4x6	0.19	0.66	0.76	0.60	0.70	1.12	1.70	11/16	11/16	9/16
4	3/8 x 5/16		6RUD5x4	6RUD5x6	0.25			0.64	0.73	1.16	1.74	11/16		5/8
5	1/2 x 1/4		8RUD4x4	8RUD4x6	0.19	0.90	0.86	0.60	0.70	1.16	1.85	7/8	7/8	9/16
6	1/2 x 3/8		8RUD6x4	8RUD6x6	0.28			0.66	0.76	1.22	1.91	7/8		11/16
7	5/8 x 1/2		10RUD8x4	10RUD8x6	0.41	0.96	0.86	0.90	0.86	1.25	2.05	1	1	7/8
8	3/4 x 1/2		12RUD8x4	12RUD8x6	0.41	0.96	0.86	0.90	0.86	1.31	2.11	1.1/16	1.1/8	7/8
9	1 x 1/2		16RUD8x4	16RUD8x6	0.41	1.23	1.04	0.90	0.86	1.50	2.38	1.3/8	1.1/2	7/8
10	1 x 3/4		16RUD12x4	16RUD12x6	0.62			0.96	0.86	1.50	2.38	1.3/8		1.1/8

- NOTE : ① The E Dimension is the minimum opening.
② Dimension L1, C, D, C1, D1 is shown in the finger-tight position.

02. Metric Tube x Metric Tube

Material - **SS 304 | SS 316**



Sr. No.	TUBE OD	TUBE OD	Ref. Part No.		ØE	D	C	D1	C1	L	L1	Body Hex F	Nut Hex W	Nut Hex W1
	Ø T	Ø T1	SS 304	SS 316										
	(mm)	(mm)	MRUD4	MRUD6	Dimensions in Millimetres									
1	8 x 6		8MRUD6Mx4	8MRUD6Mx6	4.8	16.2	18.6	15.3	17.7	27.4	42.3	16	16	14.2
2	10 x 8		10MRUD8Mx4	10MRUD8Mx6	6.4	17.2	19.5	16.2	18.6	30.0	45.1	19	19	16
3	12 x 6		12MRUD6Mx4	12MRUD6Mx6	4.8	22.8	22.0	15.3	17.7	29.5	47.0	22.2	22.2	14.2
4	12 x 8		12MRUD8Mx4	12MRUD8Mx6	6.4			16.2	18.6	30.2	47.8	22.2		16
5	12 x 10		12MRUD10Mx4	12MRUD10Mx6	7.9			17.2	19.5	31.0	48.7	22.2		19
6	16 x 12		16MRUD12Mx4	16MRUD12Mx6	9.5	24.4	22.0	22.8	22.0	31.8	52.0	25.4	25.4	22.2
7	25 x 18		25MRUD18Mx4	25MRUD18Mx6	15.1	31.6	26.5	24.4	22.0	38.6	61.0	35	38	30

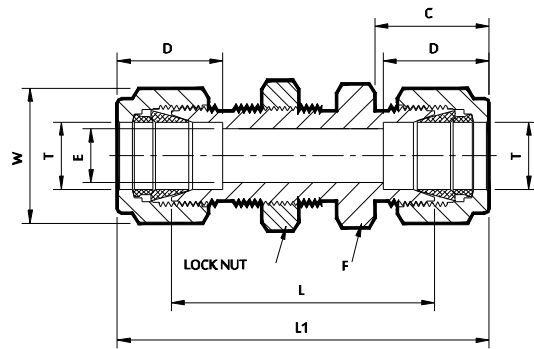
- NOTE : ① The E Dimension is the minimum opening.
② Dimension L1, C, D, C1, D1 is shown in the finger-tight position.

All part numbers are proprietary of their respective owners, Dimensions are for reference only and are subject to change

2.9 Bulkhead Union

01. Fractional Tube x Fractional Tube

Material - **SS 304 | SS 316**



Sr. No.	TUBE OD Ø T	Ref. Part No.		ØE	D	C	L	L1	Body Hex F	Nut Hex W
		SS 304	SS 316							
		BUD4	BUD6	Dimensions in Inches						
1	1/8	2BUDx4	2BUDx6	0.09	0.50	0.60	1.50	2.02	7/16	7/16
2	1/4	4BUDx4	4BUDx6	0.19	0.60	0.70	1.69	2.27	9/16	9/16
3	5/16	5BUDx4	5BUDx6	0.25	0.64	0.73	1.81	2.39	9/16	5/8
4	3/8	6BUDx4	6BUDx6	0.28	0.66	0.76	1.87	2.45	5/8	11/16
5	1/2	8BUDx4	8BUDx6	0.41	0.90	0.86	2.00	2.80	7/8	7/8
6	5/8	10BUDx4	10BUDx6	0.50	0.96	0.86	2.06	2.86	1	1
7	3/4	12BUDx4	12BUDx6	0.63	0.96	0.86	2.31	3.11	1.1/16	1.1/8
8	1	16BUDx4	16BUDx6	0.88	1.23	1.04	2.81	3.77	1.3/8	1.1/2

02. Metric Tube x Metric Tube

Material - **SS 304 | SS 316**

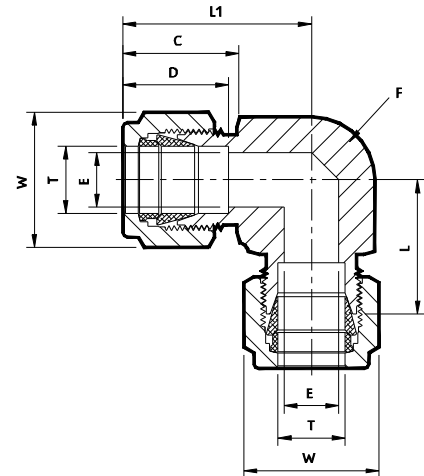
Sr. No.	TUBE OD Ø T	Ref. Part No.		ØE	D	C	L	L1	Body Hex F	Nut Hex W
		SS 304	SS 316							
		MBUD4	MBUD6	Dimensions in Millimetres						
1	3	3MBUDx4	3MBUDx6	2.4	12.9	15.3	38.1	51.3	11.1	11.1
2	6	6MBUDx4	6MBUDx6	4.8	15.3	17.7	42.9	57.7	14.2	14.2
3	8	8MBUDx4	8MBUDx6	6.4	16.2	18.6	46.0	61.0	16	16
4	10	10MBUDx4	10MBUDx6	7.9	17.2	19.5	48.5	63.7	19	19
5	12	12MBUDx4	12MBUDx6	9.5	22.8	22.0	50.8	71.0	22.2	22.2
6	15	15MBUDx4	15MBUDx6	11.9	24.4	22.0	52.3	72.5	25.4	25.4
7	16	16MBUDx4	16MBUDx6	12.7	24.4	22.0	52.3	72.5	25.4	25.4
8	18	18MBUDx4	18MBUDx6	15.1	24.4	22.0	58.7	78.9	27	30
9	20	20MBUDx4	20MBUDx6	15.9	26.0	22.0	64.3	84.5	30	32
10	25	25MBUDx4	25MBUDx6	21.8	31.3	26.5	71.2	95.8	35	38

- For Lock Nut use 'BUND'

- NOTE : ① The E Dimension is the minimum opening.
② Dimension L1, D is shown in the finger-tight position.

2.10 Union Elbow

01. Fractional Tube x Fractional Tube Material - **SS 304 | SS 316**



Sr. No.	TUBE OD Ø T	Ref. Part No.		ØE	D	C	L	L1	Body Hex F	Nut Hex W
		SS 304	SS 316							
		UED4	UED6	Dimensions in Inches						
1	1/8	2UEDx4	2UEDx6	0.09	0.50	0.60	0.62	0.88	1/2	7/16
2	1/4	4UEDx4	4UEDx6	0.19	0.60	0.70	0.77	1.06	9/16	9/16
3	5/16	5UEDx4	5UEDx6	0.25	0.64	0.73	0.84	1.13	9/16	5/8
4	3/8	6UEDx4	6UEDx6	0.28	0.66	0.76	0.91	1.20	11/16	11/16
5	1/2	8UEDx4	8UEDx6	0.41	0.90	0.86	1.02	1.42	13/16	7/8
6	5/8	10UEDx4	10UEDx6	0.50	0.96	0.86	1.10	1.50	7/8	1
7	3/4	12UEDx4	12UEDx6	0.62	0.96	0.86	1.17	1.57	1.1/16	1.1/8
8	1	16UEDx4	16UEDx6	0.88	1.23	1.04	1.45	1.93	1.3/8	1.1/2

02. Metric Tube x Metric Tube Material - **SS 304 | SS 316**

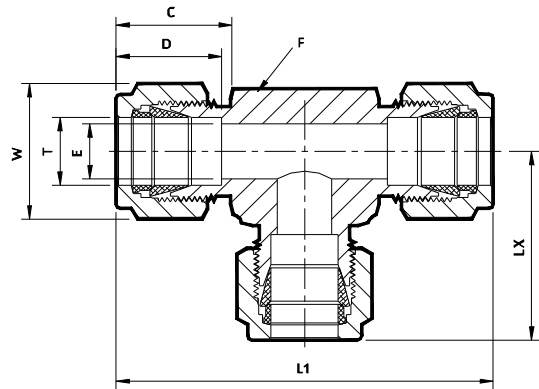
Sr. No.	TUBE OD Ø T	Ref. Part No.		ØE	D	C	L	L1	Body Hex F	Nut Hex W
		SS 304	SS 316							
		MUED4	MUED6	Dimensions in Millimetres						
1	3	3MUEDx4	3MUEDx6	2.4	12.9	15.3	15.7	22.3	12.5	11.1
2	6	6MUEDx4	6MUEDx6	4.8	15.3	17.7	19.6	27.0	14	14.2
3	8	8MUEDx4	8MUEDx6	6.4	16.2	18.6	21.3	28.8	14	16
4	10	10MUEDx4	10MUEDx6	7.9	17.2	19.5	23.9	31.5	17.5	19
5	12	12MUEDx4	12MUEDx6	9.5	22.8	22.0	25.9	36.0	20.5	22.2
6	16	16MUEDx4	16MUEDx6	12.7	24.4	22.0	28.7	38.0	22.5	25.4
7	18	18MUEDx4	18MUEDx6	15.1	24.4	22.0	29.7	39.8	27	30
8	20	20MUEDx4	20MUEDx6	15.9	26.0	22.0	34.5	44.6	32	32
9	25	25MUEDx4	25MUEDx6	21.8	31.3	26.5	36.8	49.1	36	38

- NOTE : ① The E Dimension is the minimum opening.
② Dimension L1, C, D is shown in the finger-tight position.

2.11 Union Tee

01. Fractional Tube x Fractional Tube

Material - **SS 304 | SS 316**



Sr. No.	TUBE OD Ø T	Ref. Part No.		ØE	D	C	L1	LX	Body Hex F	Nut Hex W
		SS 304	SS 316							
		UTD4	UTD6	Dimensions in Inches						
1	1/8	2UTDx4	2UTDx6	0.09	0.50	0.60	1.76	0.88	1/2	7/16
2	1/4	4UTDx4	4UTDx6	0.19	0.60	0.70	2.12	1.06	9/16	9/16
3	5/16	5UTDx4	5UTDx6	0.25	0.64	0.73	2.34	1.17	9/16	5/8
4	3/8	6UTDx4	6UTDx6	0.28	0.66	0.76	2.40	1.20	11/16	11/16
5	1/2	8UTDx4	8UTDx6	0.41	0.90	0.86	2.84	1.42	13/16	7/8
6	5/8	10UTDx4	10UTDx6	0.50	0.96	0.86	3.06	1.53	7/8	1
7	3/4	12UTDx4	12UTDx6	0.62	0.96	0.86	3.14	1.57	1.1/16	1.1/8
8	1	16UTDx4	16UTDx6	0.88	1.23	1.04	3.86	1.93	1.3/8	1.1/2

02. Metric Tube x Metric Tube

Material - **SS 304 | SS 316**

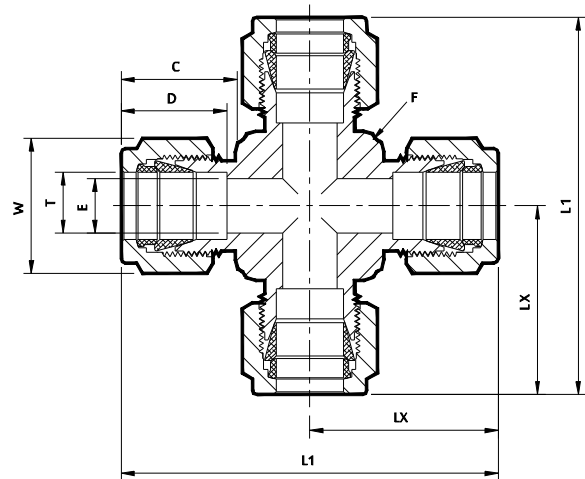
Sr. No.	TUBE OD Ø T	Ref. Part No.		ØE	D	C	L1	LX	Body Hex F	Nut Hex W
		SS 304	SS 316							
		MUTD4	MUTD6	Dimensions in Millimetres						
1	3	3MUTDx4	3MUTDx6	2.4	12.9	15.3	44.7	22.3	12.5	11.1
2	6	6MUTDx4	6MUTDx6	4.8	15.3	17.7	53.9	27.0	14	14.2
3	8	8MUTDx4	8MUTDx6	6.4	16.2	18.6	59.7	29.9	14	16
4	10	10MUTDx4	10MUTDx6	7.9	17.2	19.5	63.0	31.5	17.5	19
5	12	12MUTDx4	12MUTDx6	9.5	22.8	22.0	72.0	36.0	20.5	22.2
6	15	15MUTDx4	15MUTDx6	11.9	24.4	22.0	77.6	38.8	22.5	25.4
7	16	16MUTDx4	16MUTDx6	12.7	24.4	22.0	77.6	38.8	22.5	25.4
8	18	18MUTDx4	18MUTDx6	15.1	24.4	22.0	79.5	38.8	27	30
9	20	20MUTDx4	20MUTDx6	15.9	26.0	22.0	89.3	44.6	32	32
10	25	25MUTDx4	25MUTDx6	21.8	31.3	26.5	98.3	49.1	36	38

- NOTE : ① The E Dimension is the minimum opening.
② Dimension L1, C, D is shown in the finger-tight position.

2.12 Union Cross

01. Fractional Tube x Fractional Tube

Material - **SS 304 | SS 316**



Sr. No.	TUBE OD Ø T	Ref. Part No.		ØE	D	C	L1	LX	Body Hex F	Nut Hex W
		SS 304	SS 316							
		UCD4	UCD6	Dimensions in Inches						
1	1/8	2UCDx4	2UCDx6	0.09	0.50	0.60	1.76	0.88	1/2	7/16
2	1/4	4UCDx4	4UCDx6	0.19	0.60	0.70	2.12	1.06	9/16	9/16
3	5/16	5UCDx4	5UCDx6	0.25	5/16	0.64	2.34	0.73	9/16	5/8
4	3/8	6UCDx4	6UCDx6	0.28	0.66	0.76	2.40	1.20	11/16	11/16
5	1/2	8UCDx4	8UCDx6	0.41	0.90	0.86	2.84	1.42	13/16	7/8
6	5/8	10UCDx4	10UCDx6	0.50	0.96	0.86	2.86	1.43	7/8	1
7	3/4	12UCDx4	12UCDx6	0.62	0.96	0.86	3.14	1.57	1.1/16	1.1/8
8	1	16UCDx4	16UCDx6	0.88	1.23	1.04	3.86	1.93	1.3/8	1.1/2

02. Metric Tube x Metric Tube

Material - **SS 304 | SS 316**

Sr. No.	TUBE OD Ø T	Ref. Part No.		ØE	D	C	L1	LX	Body Hex F	Nut Hex W
		SS 304	SS 316							
		MUCD4	MUCD6	Dimensions in Millimetres						
1	3	3MUCDx4	3MUCDx6	2.4	12.9	15.3	44.7	22.3	11.1	12
2	6	6MUCDx4	6MUCDx6	4.8	15.3	17.7	53.9	27.0	14.2	14
3	8	8MUCDx4	8MUCDx6	6.4	16.2	18.6	59.7	29.9	16	16
4	10	10MUCDx4	10MUCDx6	7.9	17.2	19.5	67.0	33.5	19	19
5	12	12MUCDx4	12MUCDx6	9.5	22.8	22.0	72.0	36.0	22.2	22
6	16	16MUCDx4	16MUCDx6	12.7	24.4	22.0	74.0	37.0	25.4	25
7	18	18MUCDx4	18MUCDx6	15.1	24.4	22.0	76.6	38.3	27	30
8	20	20MUCDx4	20MUCDx6	15.9	26.0	22.0	89.3	44.6	30	32
9	25	25MUCDx4	25MUCDx6	21.8	31.3	26.5	98.3	49.1	35	38

- NOTE : ① The E Dimension is the minimum opening.
② Dimension L1, C, D is shown in the finger-tight position.

2.13 Pipe Fitting Part 1

1/16"-2" NPT, 1/8"-1/2" BSP/ISO, SAE/MS

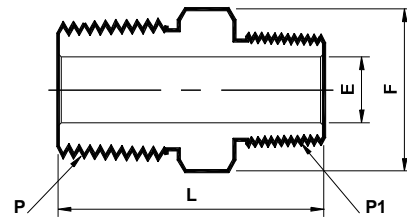
vikay[®]

Valves and fittings

01. Hex Reducing Nipple

Material - **SS 304 | SS 316**

NPT (M) x NPT (M)
(N - PHRN - N)



Sr. No.	NPT ② Male Pipe Size P	NPT ② Male Pipe Size P1	Ref. Part No.		L	ØE ①	Hex F
			SS 304	SS 316			
			PHRN4	PHRN6	Dimensions in Inches		
1	(1/4 x 18) x (1/8 x 27)		4PHRN2Nx4	4PHRN2Nx6	1.22	0.19	9/16
2	(3/8 x 18) x (1/4 x 18)		6PHRN4Nx4	6PHRN4Nx6	1.43	0.28	11/16
3	(1/2 x 14) x (1/4 x 18)		8PHRN4Nx4	8PHRN4Nx6	1.65	0.28	7/8
4	(1/2 x 14) x (3/8 x 18)		8PHRN6Nx4	8PHRN6Nx6	1.65	0.38	7/8
5	(3/4 x 14) x (1/2 x 14)		12PHRN8Nx4	12PHRN8Nx6	1.84	0.47	1.1/16
6	(1 x 11.5) x (1/2 x 14)		16PHRN8Nx4	16PHRN8Nx6	2.13	0.47	1.3/8
7	(1 x 11.5) x (3/4 x 14)		16PHRN12Nx4	16PHRN12Nx6	2.13	0.62	1.3/8

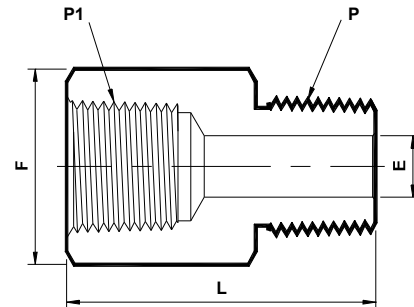
NOTE : ① The 'E' Dimension is the minimum opening.

② NPT thread as per ANSI B 1.20.1.

02. Adapter

Material - **SS 304 | SS 316**

NPT (M) x NPT (F)
(N - PA)



Sr. No.	NPT ② Male Pipe Size P	NPT ② Female Pipe Size P1	Ref. Part No.		L	ØE ①	Hex F
			SS 304	SS 316			
			NPA4	NPA6	Dimensions in Inches		
1	(1/8 x 27) x (1/8 x 27)		2NPAx4	2NPAx6	1.10	0.19	9/16
2	(1/4 x 18) x (1/4 x 18)		4NPAx4	4NPAx6	1.40	0.28	3/4
3	(3/8 x 18) x (3/8 x 18)		6NPAx4	6NPAx6	1.51	0.38	7/8
4	(1/2 x 14) x (1/2 x 14)		8NPAx4	8NPAx6	1.94	0.47	1.1/16
5	(3/4 x 14) x (3/4 x 14)		12NPAx4	12NPAx6	2.02	0.62	1.1/4
6	(1 x 11.5) x (1 x 11.5)		16NPAx4	16NPAx6	2.28	0.88	1.5/8

NOTE : ① The 'E' Dimension is the minimum opening.

② NPT thread as per ANSI B 1.20.1.

All part numbers are proprietary of their respective owners, Dimensions are for reference only and are subject to change

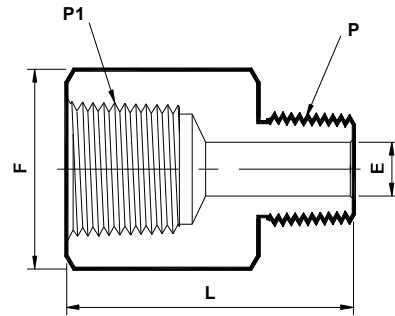
2.13 Pipe Fitting Part 1

1/16"-2" NPT, 1/8"-1/2" BSP/ISO, SAE/MS

03. Reducing Adapter

Material - **SS 304 | SS 316**

NPT (F) x NPT (M)
(N - PRA - N)



Sr. No.	NPT ② Female Pipe Size P1	NPT ② Male Pipe Size P	Ref. Part No.		L	ØE ①	Hex F
			SS 304	SS 316			
			PRA4	PRA6	Dimensions in Inches		
1	(1/4 x 18) x (1/8 x 27)		4PRA2Nx4	4PRA2Nx6	1.26	0.19	3/4
2	(3/8 x 18) x (1/4 x 18)		6PRA4Nx4	6PRA4Nx6	1.50	0.28	7/8
3	(1/2 x 14) x (1/4 x 18)		8PRA4Nx4	8PRA4Nx6	1.76	0.28	1.1/16
4	(1/2 x 14) x (3/8 x 18)		8PRA6Nx4	8PRA6Nx6	1.75	0.38	1.1/16
5	(3/4 x 14) x (1/2 x 14)		12PRA8Nx4	12PRA8Nx6	2.02	0.47	1.1/4
6	(1 x 11.5) x (1/2 x 14)		16PRA8Nx4	16PRA8Nx6	2.16	0.47	1.5/8
7	(1 x 11.5) x (3/4 x 14)		16PRA12Nx4	16PRA12Nx6	2.17	0.62	1.5/8

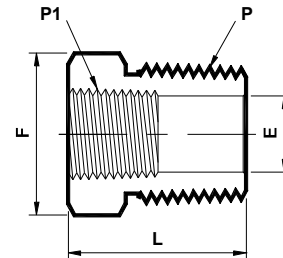
NOTE : ① The 'E' Dimension is the minimum opening.

② NPT thread as per ANSI B 1.20.1.

04. Reducing Bushing

Material - **SS 304 | SS 316**

NPT (M) x NPT (F)
(N - PRB - N)



Sr. No.	NPT ② Male Pipe Size P	NPT ② Female Pipe Size P1	Ref. Part No.		L	ØE ①	Hex F
			SS 304	SS 316			
			PRB4	PRB6	Dimensions in Inches		
1	(1/4 x 18) x (1/8 x 27)		4PRB2Nx4	4PRB2Nx6	1.06	0.28	9/16
2	(3/8 x 18) x (1/8 x 27)		6PRB2Nx4	6PRB2Nx6	0.86	0.34	3/4
3	(3/8 x 18) x (1/4 x 18)		6PRB4Nx4	6PRB4Nx6	1.19	0.38	3/4
4	(1/2 x 14) x (1/8 x 27)		8PRB2Nx4	8PRB2Nx6	1.08	0.34	7/8
5	(1/2 x 14) x (1/4 x 18)		8PRB4Nx4	8PRB4Nx6	1.08	0.45	7/8
6	(1/2 x 14) x (3/8 x 18)		8PRB6Nx4	8PRB6Nx6	1.41	0.47	7/8
7	(3/4 x 14) x (1/4 x 18)		12PRB4Nx4	12PRB4Nx6	1.08	0.45	1.1/16
8	(3/4 x 14) x (3/8 x 18)		12PRB6Nx4	12PRB6Nx6	1.08	0.59	1.1/16
9	(3/4 x 14) x (1/2 x 14)		12PRB8Nx4	12PRB8Nx6	1.63	0.62	1.1/16
10	(1 x 11.5) x (1/4 x 18)		16PRB4Nx4	16PRB4Nx6	1.37	0.45	1.3/8
11	(1 x 11.5) x (3/8 x 18)		16PRB6Nx4	16PRB6Nx6	1.37	0.59	1.3/8
12	(1 x 11.5) x (1/2 x 14)		16PRB8Nx4	16PRB8Nx6	1.37	0.73	1.3/8
13	(1 x 11.5) x (3/4 x 14)		16PRB12Nx4	16PRB12Nx6	1.85	0.88	1.3/8

NOTE : ① The 'E' Dimension is the minimum opening.

② NPT thread as per ANSI B 1.20.1.

2.13 Pipe Fitting Part 1

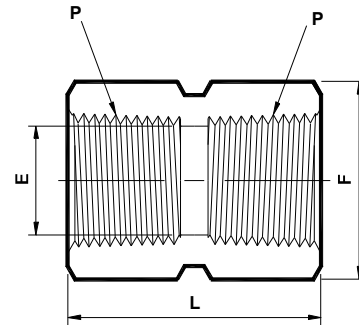
1/16"-2" NPT, 1/8"-1/2" BSP/ISO, SAE/MS

05. Hex Coupling

Material - **SS 304 | SS 316**

NPT (F) x NPT (F)

(N - PHC)



Sr. No.	NPT ② Female Pipe Size P	Ref. Part No.		L	ØE ①	Hex F
		SS 304	SS 316			
		NPHC4	NPHC6	Dimensions in Inches		
1	1/8 x 27	2NPHCx4	2NPHCx6	0.81	0.34	9/16
2	1/4 x 18	4NPHCx4	4NPHCx6	1.19	0.45	3/4
3	3/8 x 18	6NPHCx4	6NPHCx6	1.31	0.59	7/8
4	1/2 x 14	8NPHCx4	8NPHCx6	1.56	0.73	1.1/16
5	3/4 x 14	12NPHCx4	12NPHCx6	1.62	0.94	1.1/4
6	1 x 11.5	16NPHCx4	16NPHCx6	2.00	1.17	1.5/8

NOTE : ① The 'E' Dimension is the minimum opening.

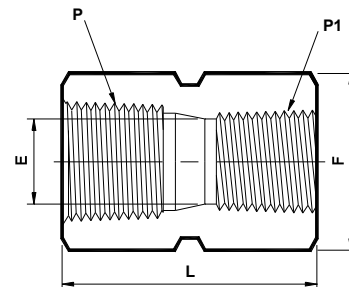
② NPT thread as per ANSI B 1.20.1.

06. Hex Reducing Coupling

Material - **SS 304 | SS 316**

NPT (F) x NPT (F)

(N - PHRC - N)



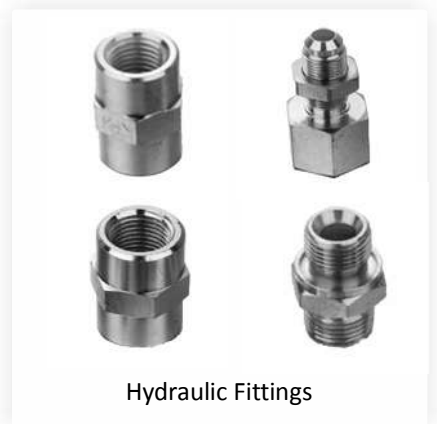
Sr. No.	NPT ② Female Pipe Size P	NPT ② Female Pipe Size P1	Ref. Part No.		L	ØE ①	Hex F
			SS 304	SS 316			
			PHRC4	PHRC6	Dimensions in Inches		
1	(3/8 x 18) x (1/4 x 18)		6PHRC4Nx4	6PHRC4Nx6	1.38	0.45	7/8
2	(1/2 x 14) x (1/8 x 27)		8PHRC2Nx4	8PHRC2Nx6	1.56	0.34	9/16
3	(1/2 x 14) x (1/4 x 18)		8PHRC4Nx4	8PHRC4Nx6	1.75	0.45	1.1/16
4	(1/2 x 14) x (3/8 x 18)		8PHRC6Nx4	8PHRC6Nx6	1.78	0.59	1.1/16
5	(3/4 x 14) x (1/2 x 14)		12PHRC8Nx4	12PHRC8Nx6	2.06	0.73	1.1/4
6	(1 x 11.5) x (1/2 x 14)		16PHRC8Nx4	16PHRC8Nx6	2.19	0.73	1.5/8
7	(1 x 11.5) x (3/4 x 14)		16PHRC12Nx4	16PHRC12Nx6	2.25	0.94	1.5/8

NOTE : ① The 'E' Dimension is the minimum opening.

② NPT thread as per ANSI B 1.20.1.

Ferrule

Nut



Vikay Mining Equipments

2/5 Vyas Wadi, Dadabhai Road, Vile Parle (West), Mumbai - 400 056. INDIA.

Tel. : +91 - 22 - 2623 7205 / 2624 3729  +91 9820079729

Email : vkmining@gmail.com Website : www.vk fittings.com

